

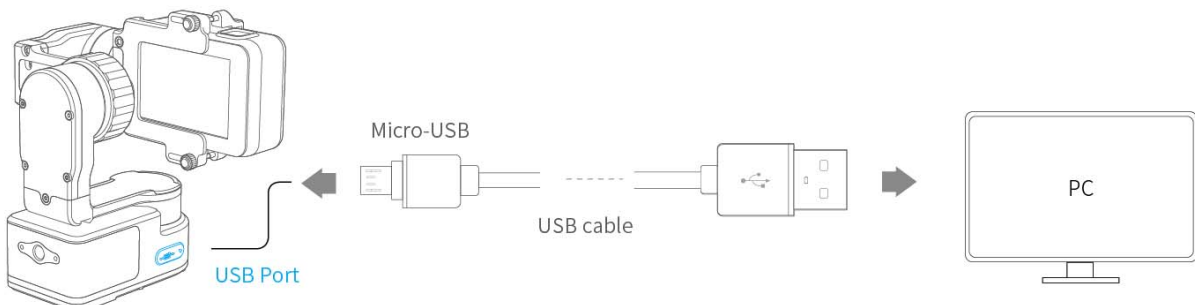
# WG2 Gimbal Firmware Upgrade Manual

## Attention

- Please do not operate any other function button except the ones indicated by the instructions during upgrade.
- The firmware upgrade software is compatible with Windows operation system provisionally, including Window XP / 7 / 8 / 8.1 / 10.
- If you want to upgrade it in Mac, Please kindly download the upgrade software and USB driver for Mac from our official website.
- If you want to get the current version of the gimbal, please do the operations step 1~7.

## Steps

1. Download the USB driver from FeiyuTech official website <http://www.feyu-tech.com> and install it. Then download the upgrade software and the firmware for WG2.
2. Please refer the following connection diagram, connect the USB cable with USB port of the computer and the gimbal. please make sure the gimbal is powered off until step 7.

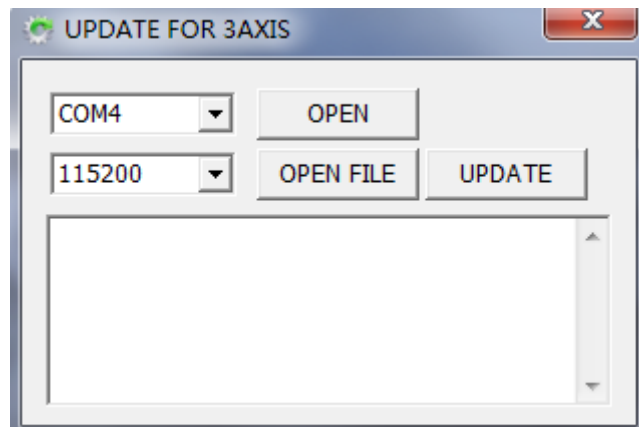


3. Check the port number in device manager .If the port number is more than COM10 , please modify it to available number which is within COM10 .
4. Run the software --- "Gimbal-Update-3AXIS" directly if you have a PC with Windows XP/7/8/8.1 .

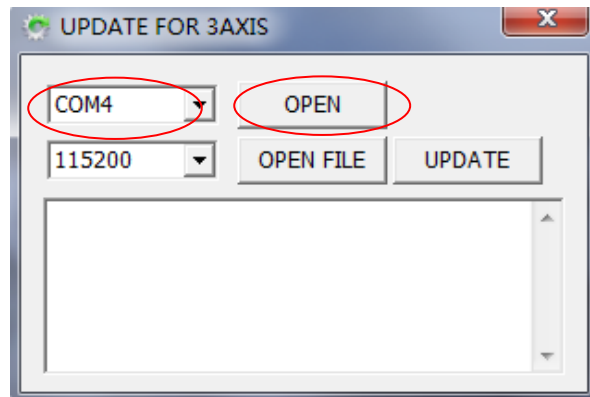


If you have a PC with windows10 operation system, please right click the icon of the software ,choose "Trouble shoot compatibility" ---" Try the recommended settings" ---" test program" , Run the upgrade software in compatibility mode.

5. Software interface is shown in following picture:



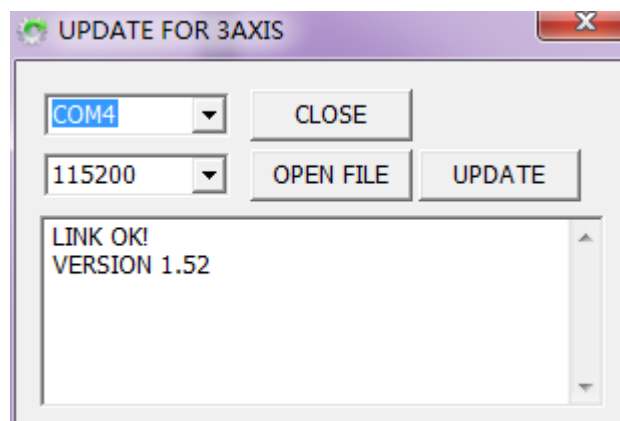
6. Choose correct port number and correct baud rate as 115200, then click on **OPEN** button to open COM port.(The serial port number should be the same as step 3).



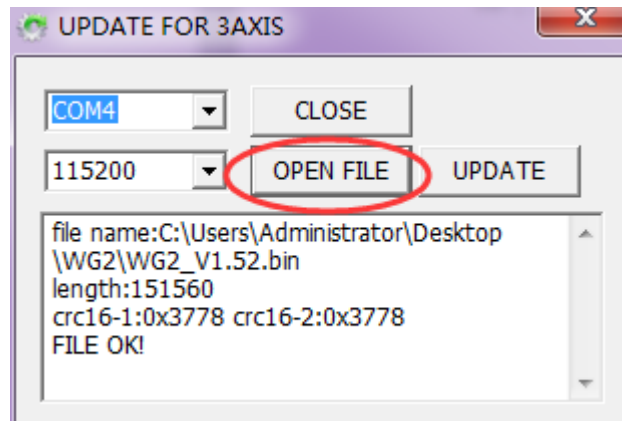
7. Long press the function button, The connection between the gimbal and the computer will be established automatically, The connection status and the current version show up(For example, "LINK OK! VERSION 1.52"), Keep holding the function button for 2~3 seconds after "LINK OK" showing up.

Release it, the indicator will alternately flashing blue and red , Which means the power is ready and the connection is done.

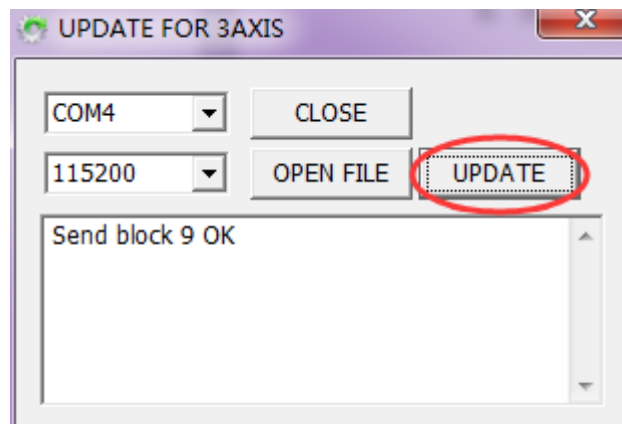
(Tips: if you can' t see that the indicator alternately flashing blue and red, please long press the function button for 2 seconds again.)



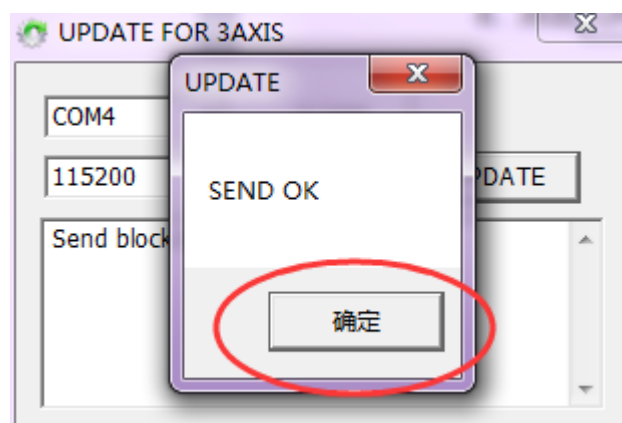
8. Click on **OPEN FILE** button and choose the correct firmware for the WG2



9. Click on **UPDATE** button to start upgrading, the process will display on the software.



10. After all the blocks of the firmware are completely sent , please click on **Confirm** button to finish the upgrade. Close the software then unplug the USB cable. Long press the function button of the gimbal to power off. All the upgrade is done.



## FAQ

**NO.1** "Link OK " didn' t show up when pressing the function button.

**A:**

- ① Please check whether tightly plug in USB cable with USB port, and the USB cable is right cable from our standard accessories.
- ② Please check whether keep the gimbal off until step7.
- ③ Please check whether choose the right USB port and the baudrate as 115200.
- ④ Please check whether press the function button after clicking on "OPEN COM " button.

If you did all the things above right, please replace a new USB cable and try again.

**NO.2** When" LINK OK" and the version of current firmware showing up, click on "UPDATE START" , but no luck, " SEND FAIL" just show up to remind me the update don' t work.

**A:** It happened because you didn' t hold the function button for enough time, and the power didn' t start well. When the power is ready , the indicator alternately flashes blue and red, if not, please keep holding the function button for 2 seconds.

**NO.3** After clicking on "UPDATE START" , "send block 10..." show up in the interface , but " SEND FAIL" happen during the update.

**A:** If " SEND FAIL" shows up during the update, there may be something wrong with the connection between control boards.

Please try to start update again, if the same issue happen, please kindly send back to us for repair.

**Check more details in tutorial video of G5(The same operation except the battery as G5):** <https://youtu.be/yDHTLYQtnbc>

—— END ——

**Note:** We reserve the right to change this manual at any time! And the newest edition will be shown on our official website [www.feiyu-tech.com](http://www.feiyu-tech.com).