



SPG

3-Axis Video Stabilized Handheld Gimbal for iPhone

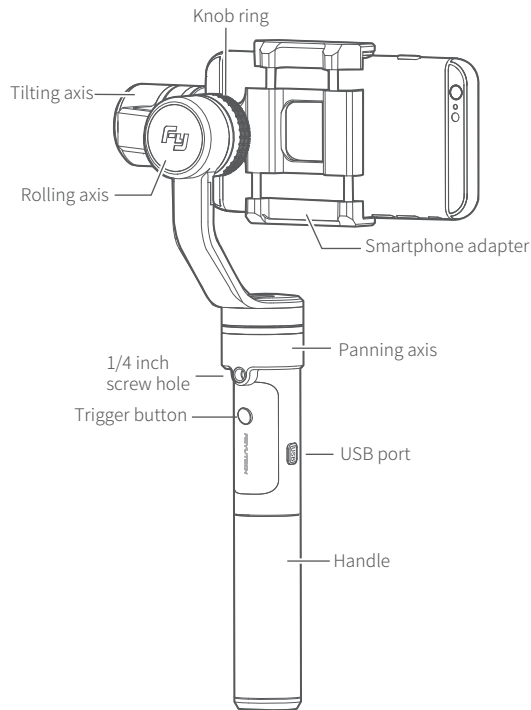
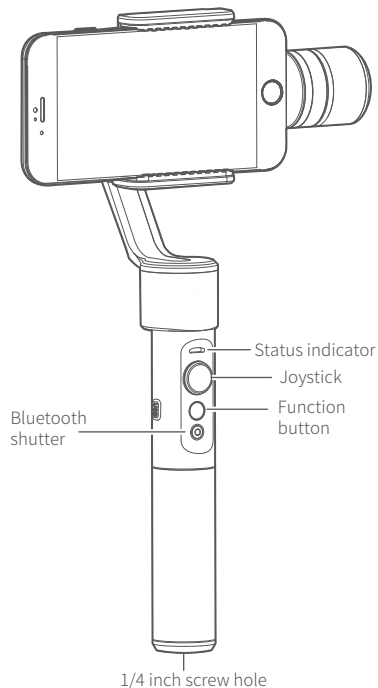
iPhone 7 Plus / 7 / 6s Plus / 6s / 6 Plus / 6 / SE / 5s / 5c / 5

Guilin Feiyu Technology Incorporated Company

User Manual EN V2.0

1. Product Overview

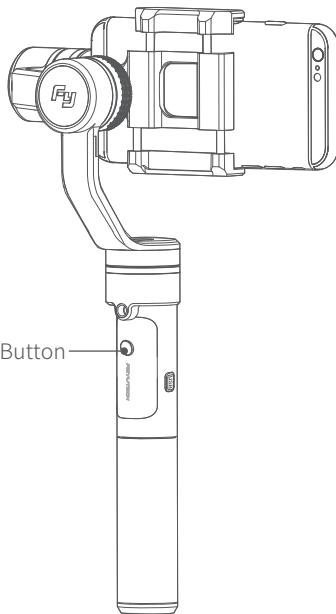
* The showing smartphone is only for reference



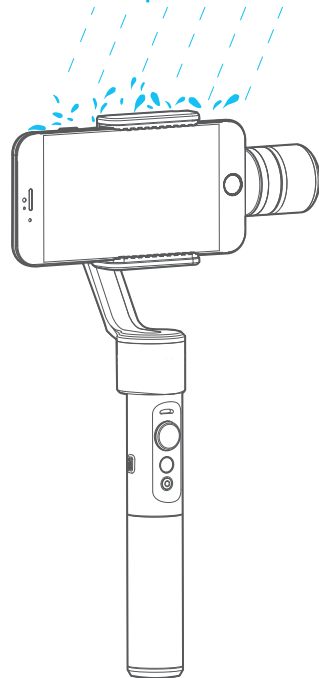
Trigger Button

- ▶ Long press
Lock Mode
- ▶ Long press + joystick up and down
Control the App Lens Zoom
- ▶ Double tap
Panning Reset

Trigger Button



Water Splash Proof

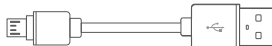


*Never submerge the gimbal in water

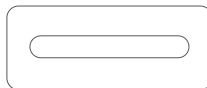
Package List



Portable bag X1



USB cable X1

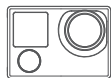


Compatible accessoriesX2

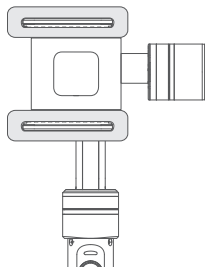


Battery
(Type:22650)X1

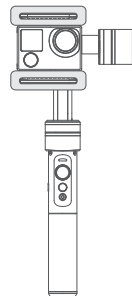
Enclosed: How to use the compatible accessories



Small camera
(For reference)



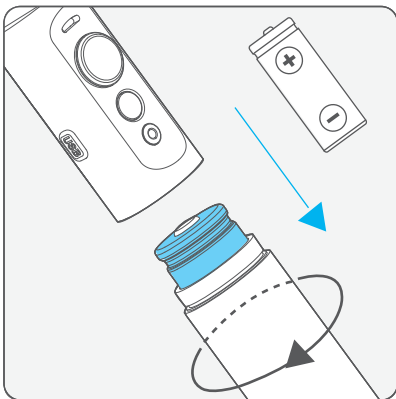
After installation:



2. User Guide

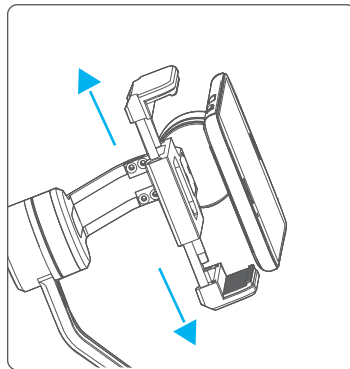
1 Install the battery

Remove the handle and insert one 22650 battery into it.



2 Install the smartphone

Attach the smartphone with the quick-release adapter, and ensure it is secure.



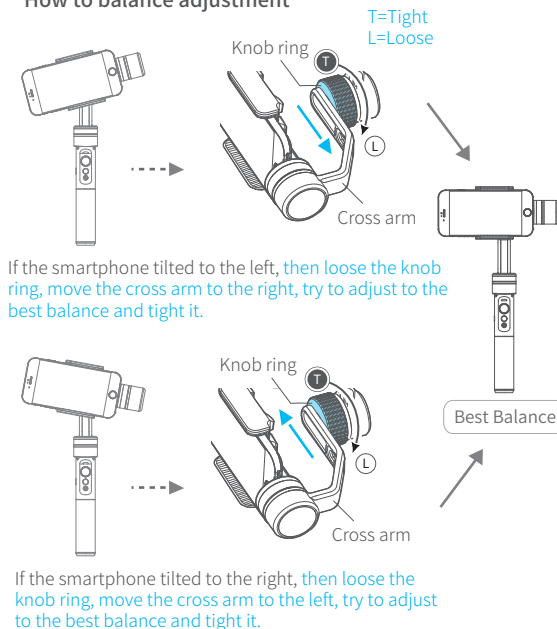
▲ **Tips:** Please take off the protective casing of the smartphone before installation.

⚠ **Attention !**

- (1) Please install the smartphone before powering on the gimbal
- (2) When not in use, turn off the gimbal and then remove the smartphone

3 Balance Adjustment

How to balance adjustment



4 Power on / off

Power on: Long press function button and release it until the green light is on.

Power off: Long press function button and release it until the red light changes from quick flashing to constant.



▲ Attention: Make sure the smartphone is secure before power on the Gimbal.



In case of low battery, the indicator will flash red 3 times every 5 seconds. Please charge SPG or replace the battery.

3. Download and connect App

1 Download App

Download "**Feiyu ON**" and install it.

(1) iOS version:



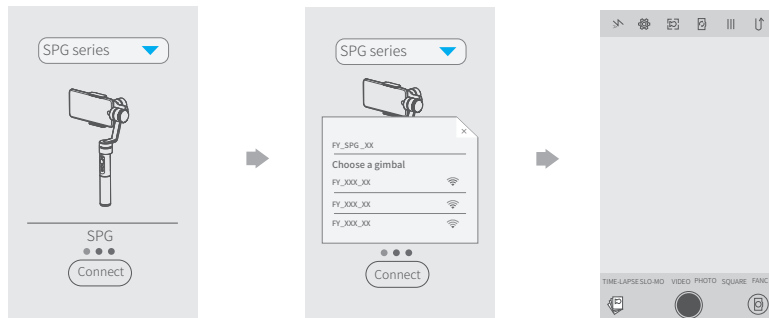
(2) Android version:



*Please scan the two-dimensional code via the browser.

2 Connecting App

Start the App on your smartphone, follow the instructions to connect the smartphone with gimbal via bluetooth.

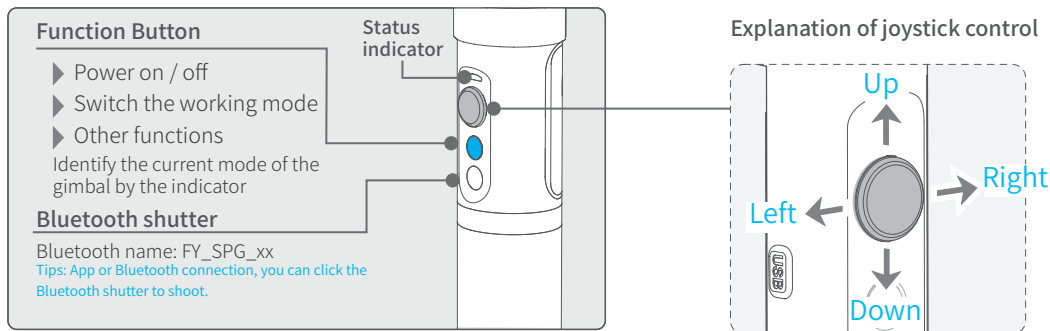


4. Mode / Function Operation Instructions

Function Button	Function	Explanation
Single tap	Panning Mode / Lock Mode	Single tap to switch between panning mode and lock mode
Double tap	Panning and Tilting Mode	Under panning and tilting mode, single tap to switch to lock mode
Triple tap	Rotate 180°in horizontal	Make the lens rotate 180 °
Quadruple tap	Reset	Reset the tilting axis of the gimbal to initial orientation and initial mode
Long press until the red light flashes quickly	Standby	Single tap again to awake the gimbal, or triple tap to initialize the gimbal

Trigger Button	Function	Explanation
Long press	Lock Mode	Enter the lock mode, release it to return to before mode
Long press + joystick up and down	Control the App Lens Zoom	Joystick up and down to control the App lens zoom; left and right to control the panning
Double tap	Panning Reset	Restore the initial follow state of the panning

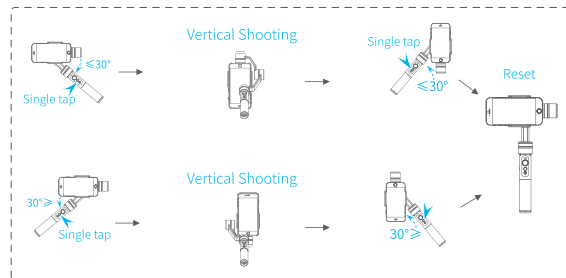
5. Operation



Explanation of LED indicator status

Indicator status	Mode / Status
Blue light flashes once	Panning mode
Blue light flashes twice	Panning and Tilting mode
Blue light flashes for three times	Standby
Blue light constant on	Lock mode / Initialize the gimbal
Blue light keeps flashing	Initialization failure / Malfunction
Red light flashes three times	Low battery
Red light keeps flashing	Entering standby / Entering power off

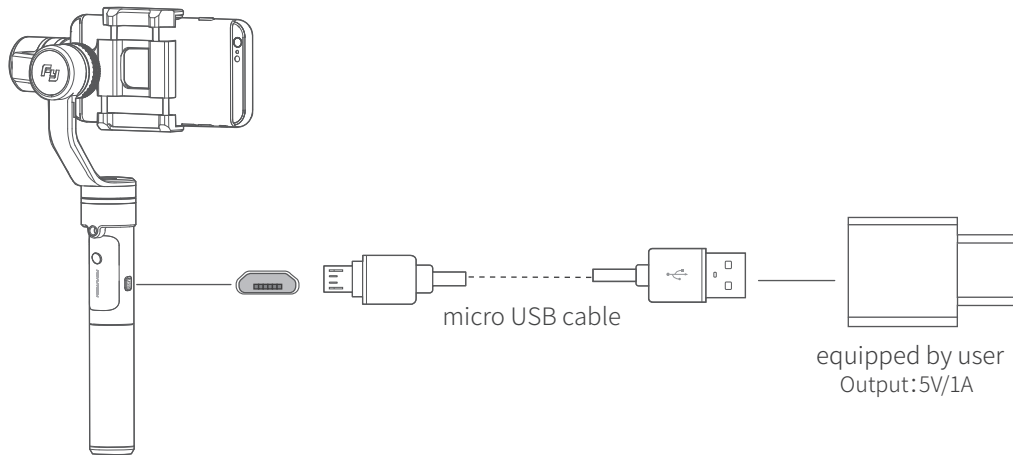
Vertical Shooting



6. Charging

* Please make sure the battery was fully charged before you power on the gimbal first time.

Option 1: charging with micro USB cable.

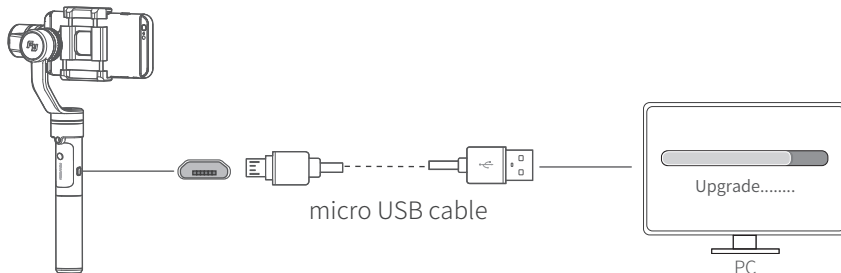


Option 2: remove the battery and charge the battery with charger(equipped by user).

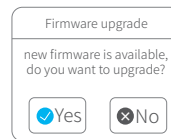
7. Firmware Upgrade

(1) Option 1: connect the gimbal with PC via micro USB cable, and then upgrade the firmware.

Please visit the official website www.feiyu-tech.com to download the relevant programs for upgrading, including USB driver, firmware upgrade software and product firmware, and install the relevant software, decompress the firmware files for standby application.



(2) Option 2: connect the gimbal with smartphone via bluetooth, and then upgrade the firmware.

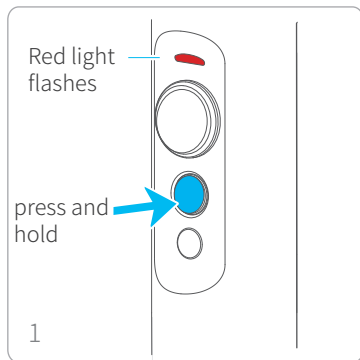


8. Gimbal initialization

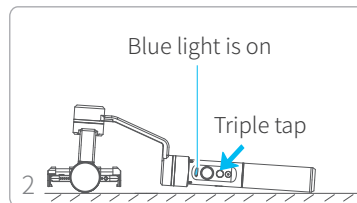
You can initialize your gimbal when:

- (1) when smartphone is not level
- (2) if not used for a long period of time
- (3) in case of extreme temperature variations

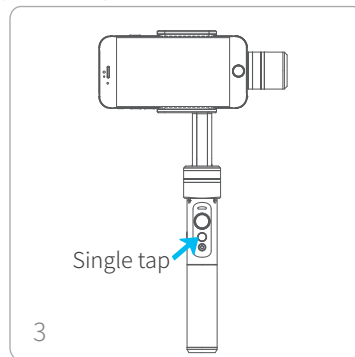
Adjusting steps:



Long press function button and release it until the red light flash, the gimbal enter the standby mode, the blue light will flash 3 times periodically.

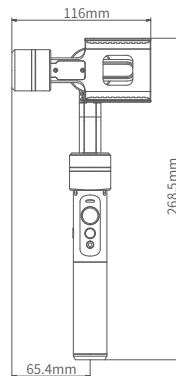
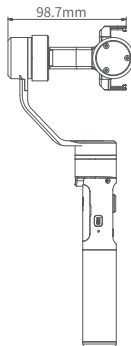
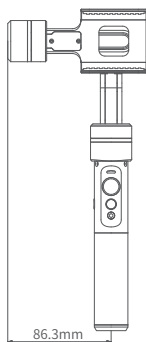


Lay the gimbal on a static flat surface and triple tap the function button. Initialization is successful when the blue light changes from constant on to flashing 3 times periodically, otherwise fail.



Click again to wake up the gimbal.

9. Parameters



Titling Angle

320°

Rolling Angle

320°

Panning Angle

360°

Tilting Increments

2°/s ~ 75°/s

Panning Increments

3°/s ~ 150°/s

Usage Time

7 Hours

Adaption

iPhone 7 Plus/7/6s Plus/6s/6 Plus/6/SE/5c/5s/5(Adaptation of similar size mobile phone)

Weight

350g (not including battery and smartphone)

DISCLAIMER

Prohibit any user for any illegal purpose. Users will be responsible for all behaviors of purchase and use products.

The Company assumes no liability for any risks related to or resulting from the debug and use of this product (including the direct, indirect or third-party losses).

For any unknown sources of using, we will not be at any services.

The updating and changes of product firmware and program may cause changes in function descriptions in this user manual, please read the instructions carefully before upgrading the firmware and use the corresponding user manual.

You can get the latest user manual from the official website: www.feiyu-tech.com

Feiyu Tech reserves the right to amend this manual and the terms and conditions of use the gimbal at any time.

Attention

- Please correctly assemble the gimbal in accordance with the diagram.
- Please install the iPhone before powering on the gimbal.
- When the gimbal is not in use or placed on the table, please ensure it is powered off.

Guilin Feiyu Technology Incorporated Company

Website: www.feiyu-tech.com

E-mail: service@feiyu-tech.com

Tel: +86 (0)773 2320865

Due to software and hardware improvements, your actual product might differ from the descriptions and pictures in this user manual. You can get the latest user manual from the official website.

For more information, please visit our official website

